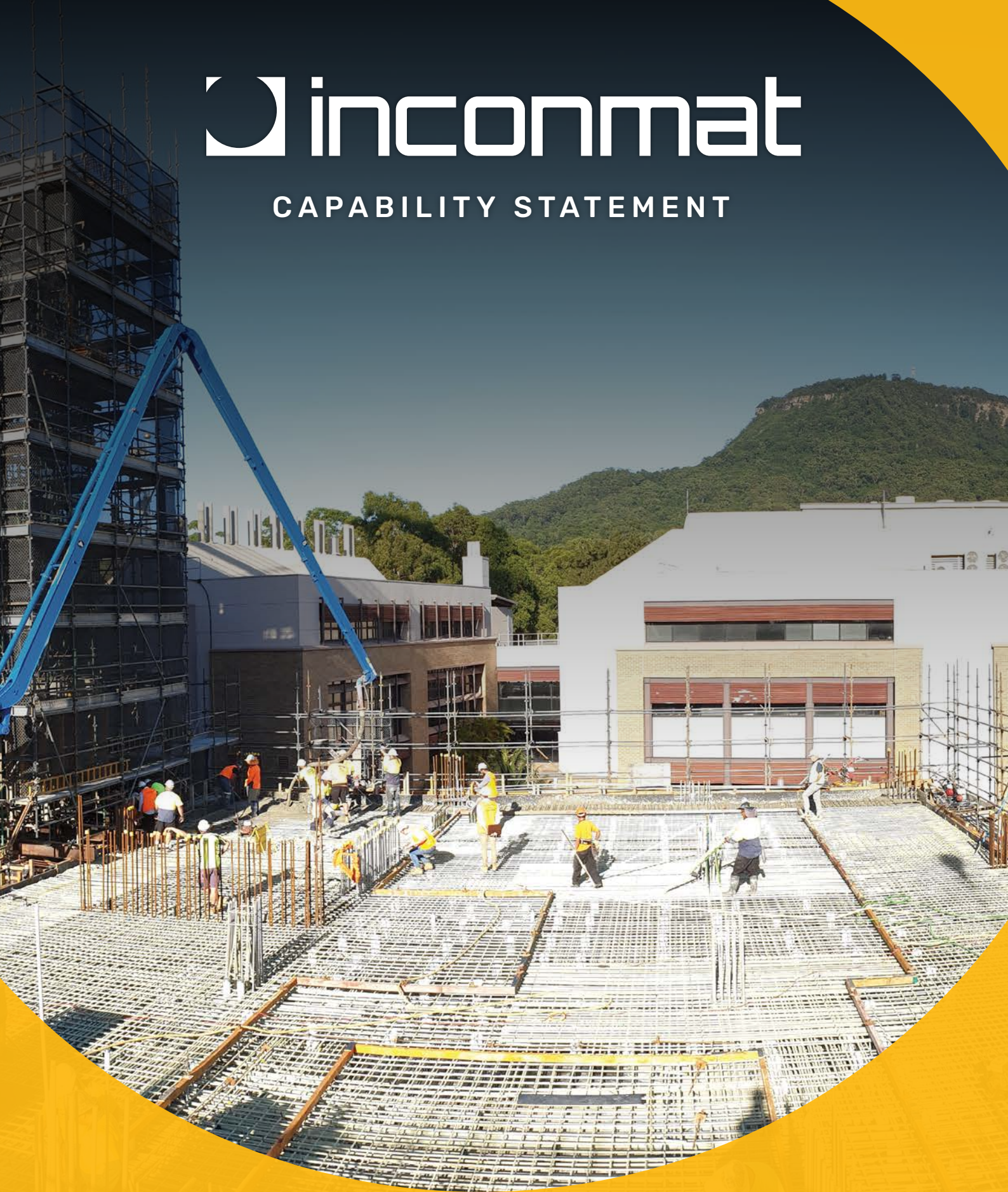




## CAPABILITY STATEMENT



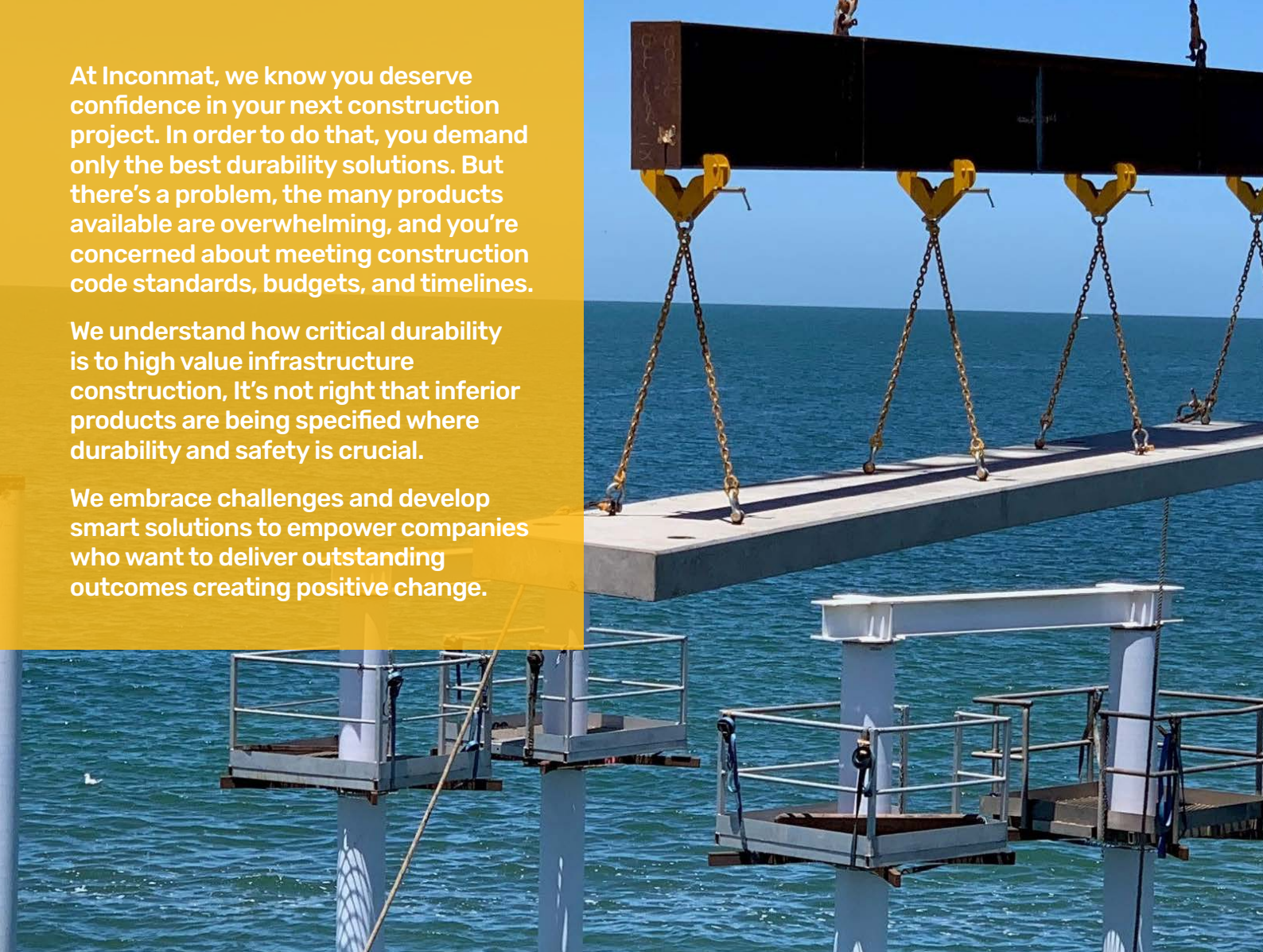
**LEADERS IN DURABILITY  
SPECIALISING IN HIGH VALUE  
INFRASTRUCTURE CONSTRUCTION PROJECTS**

[INCONMAT.COM.AU](http://INCONMAT.COM.AU)

At Inconmat, we know you deserve confidence in your next construction project. In order to do that, you demand only the best durability solutions. But there's a problem, the many products available are overwhelming, and you're concerned about meeting construction code standards, budgets, and timelines.

We understand how critical durability is to high value infrastructure construction. It's not right that inferior products are being specified where durability and safety is crucial.

We embrace challenges and develop smart solutions to empower companies who want to deliver outstanding outcomes creating positive change.



An aerial photograph of a construction site, likely a large-scale building or infrastructure project. The image shows extensive scaffolding and a network of steel reinforcement bars (rebar) laid out on a concrete surface. A worker in a yellow safety vest and white hard hat is visible on a platform within the scaffolding. The overall scene is one of active construction and development.

# From the CEO

Incomat is partnering with organisations on a process of renewal and value creation through the supply of sustainable building products. This renewal is not just about supplying the best products and services, people and processes. We looking much deeper, reconsidering our purpose and defining “why” we do what we do.

We have gone back to first principles and asked the big questions; What are we? What do we do? What are our goals? Why should they matter to people?

We have set a clear vision that is driven by our purpose, people and focus on why we are choosing to partner with businesses, communities, cities and people to build stronger and more sustainable relationships. Our work on major building, civil and infrastructure projects reflects our optimism and ambition for a better future.

Today we are partnering with organisations who understand real value is built over the lifecycle of a product not just its initial price. A relationship which will ensure positive social, economic and environmental impact.

If you have a grand challenge, bold vision or agenda to advance together we can create value through the development of places where communities can thrive.

A stylized, handwritten signature in white ink that reads "D Lutze". The signature is fluid and cursive, with the first letter 'D' being particularly large and prominent.

D Lutze

Darren Lutze

# Our values, vision and mission, acknowledging our traditional landowners

Inconmat's values, vision and mission are lived through its people. They reflect our character, brand, culture and style. They define who we are, how we behave and what we stand for. They are our non-negotiables.

## Recognition

We acknowledge our people and client's commitment to developing sustainable building solutions.

## Innovation

We strive to offer the world's most innovative sustainable building products and service.

## Commitment

We are unwavering in our "can do approach" to meeting our clients' needs and ensuring the sustainability of our planet.

## Vision

To be the national leader in providing the world's best sustainable building products.

## Mission

To achieve success in business for our clients and ourselves by being a best of breed sustainable building products and service provider.

## Acknowledging our traditional landowners

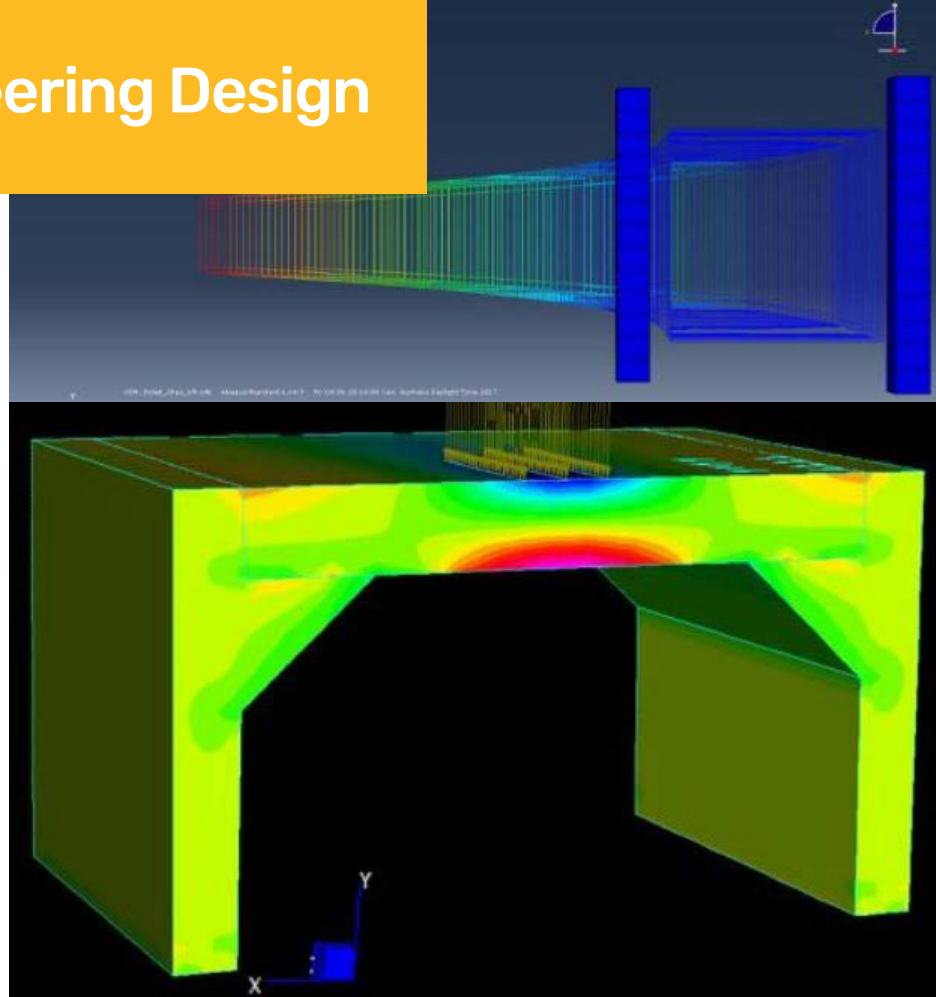
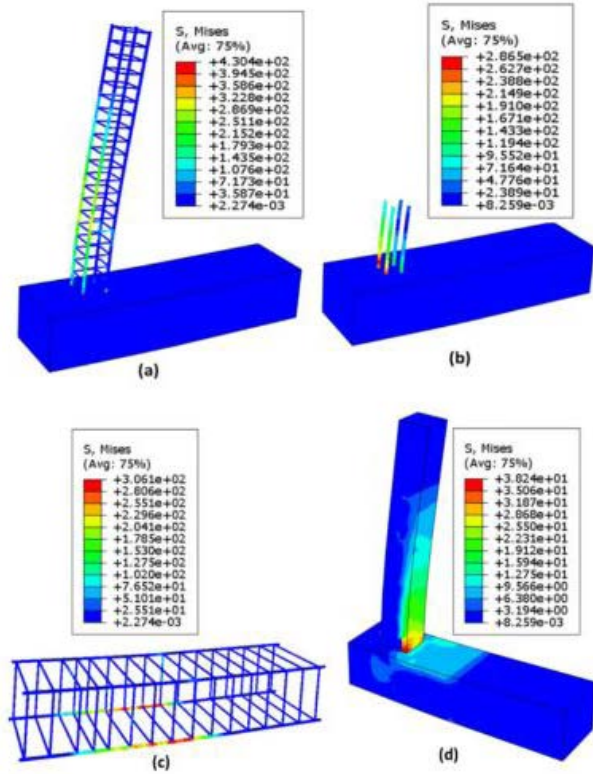
Inconmat acknowledges Aboriginal and Torres Strait Islander Australians; their spiritual, physical, emotional, intellectual and economic connection to the land, water and community. We pay respect to Elders past, present and emerging.

We recognise and respect their culture, heritage, beliefs and relationship as the first inhabitants of the nation and the traditional custodians of the lands where we live and learn to work in a more sustainable way.



# Advanced Engineering Design

## GFRP Reinforced Infrastructure





**Inconmat is a business partner to some of Australia's leading civil, structural and engineering companies.**

**As a best of breed product and service provider we collaborate with like-minded organisations who want to generate social, environmental and economic value.**

Inconmat offers sustainable and effective building products and services that provide a long-term return on investment to communities and the environment.

We're proud to lead the way in developing a more environmentally sensitive and effective approach to building, which is why every decision we make – from the choice of materials and processes to construction, waste management and ongoing maintenance – takes into account the ecological, environmental, social and economic outcomes of each of our clients' projects.

## **Our fast facts:**

- Formed in November 2009
- Family owned business
- National supplier on major civil projects
- Head Office located in Adelaide South Australia
- Australia's leading provider of GFRP reinforcing
- Integrated GFRP Rebar engineering design software to ensure compliance across various building codes
- Proven ability to deliver on major civil projects
- GFRP reinforcing research partner with several leading Australian universities



**Octaform Tanks**

# GFRP Specified for Electromagnetic Neutrality

Molecular Horizons Building: Wollongong University



The University of Wollongong's Molecular Horizons is housing the world's most powerful Transmission Electron Microscopes (TEM) GFRP specified for electromagnetic neutrality.

The sensitivity of the TEM microscopes requires the concrete structure and its surrounding environment to be constructed of ferrous free materials (GFRP) as to not cause any interference during the operation of the microscopes.



# OCTAFORM<sup>®</sup>

## BUILD IT TO LAST



Inconmat's management team combine a wealth of industry knowledge. Our leadership structure consists of three senior executives providing a balance across the business in management, finance, technology, engineering, quoting, cost estimation, procurement and project delivery. Every team member contributes in a dynamic way to ensure clients' emergent needs are met. We keep you up to date on product availability, and project deliverables to ensure you can meet the needs of your customers project management, quality and cost control requirements.

# Our People



## Darren Lutze

CEO

Darren established Inconmat in 2009 with the aim to resolve the steady decay of reinforced concrete infrastructure in Australia. Darren's research into global best practice solutions led him to establishing Inconmat as the leading GFRP reinforcing company in Australia. Since the formation of the business Darren continues to source a niche, innovative range of sustainable building products for the civil construction industry.



## Michelle Lutze

Operations Manager

Michelle has extensive experience in business management, finance and customer service. Michelle honed these skills owning and operating a highly successful and fast paced hospitality businesses. Michelle moved into the construction industry through GFRP Reinforcing bringing key skills in customer service, procurement, finance and administration. In addition to overseeing the day-to-day operations of the business she plays a lead role in the development and procurement of new building products and services.



## Ken Moyes

Project Manager

Ken has been the Project Manager for Inconmat since 2010. He has 30 years experience in the construction industry. Ken forged his career as a bricklayer before establishing himself in senior sales positions at several leading Australian construction companies. Ken has extensive experience in the rebar and sustainable building products industry. His comprehensive technical expertise and industry knowledge is key to ensuring customers are always on the front foot with expert advice.

Since its establishment in 2009, Inconmat has steadily built up a reputation for undertaking extensive testing and research to identify the right solutions that are now being used across some of Australia's most innovative civil projects, which require durability that cannot be achieved from traditional materials.

From major waterfront initiatives, to large fully planned educational facilities and integrated community centres our goal is to assist engineering and civil construction companies in developing the best and most sustainable built solutions.

We believe the words "higher quality" should not come with the impression of higher cost. Therefore, we carefully select products that over the life cycle of a project prove themselves to be far lower cost than their alternative substitutes.

## **WE PROVIDE DURABLE SOLUTIONS FOR**

- Aquaculture
- Biogas
- Building and construction
- Marine and civil construction
- GFRP Tunnelling Solutions
- Restoration systems
- Waste and water management
- Water proofing systems

**100 YEAR DESIGN LIFE  
ZERO MAINTENANCE ASK US HOW**

# Octoform Tanks



**OCTAFORM®**  
BUILD IT TO LAST





## TUFF-BAR

### Tuff Bar Fibre Glass rebar

The solution for zero maintenance infrastructure. A sustainable product providing a 100+ years lifecycle. A noncorrosive, nonmagnetic, nonconductive, thermal isolator, which is four times lighter than steel. Full design engineering material third party certifications to CSA 807 and ASTM D7957 standards.

## OCTAFORM®

**BUILD IT TO LAST**

### Octaform concrete wall forming system

A patented stay in place concrete walling systems that protects the concrete from moisture and corrosion in one easy step. The no corrosive finish is built in eliminating the need for liners, cladding or sealants. The patented forming system assembles quickly without the need for specialised labour or heavy equipment. Octaform is an outstanding product for water retaining structures and biogas tanks



### CWS Concrete water proofing

CWS products waterproof concrete for critical commercial and residential constructions. The waterproofing application act as an internal membrane for the design life of the structure. A lifetime waterproofing system, superfast application and environ-mentally friendly. Sealing cracks up to 2mm, hardening concrete to the same level as granite, protecting concrete for the life of the structure.



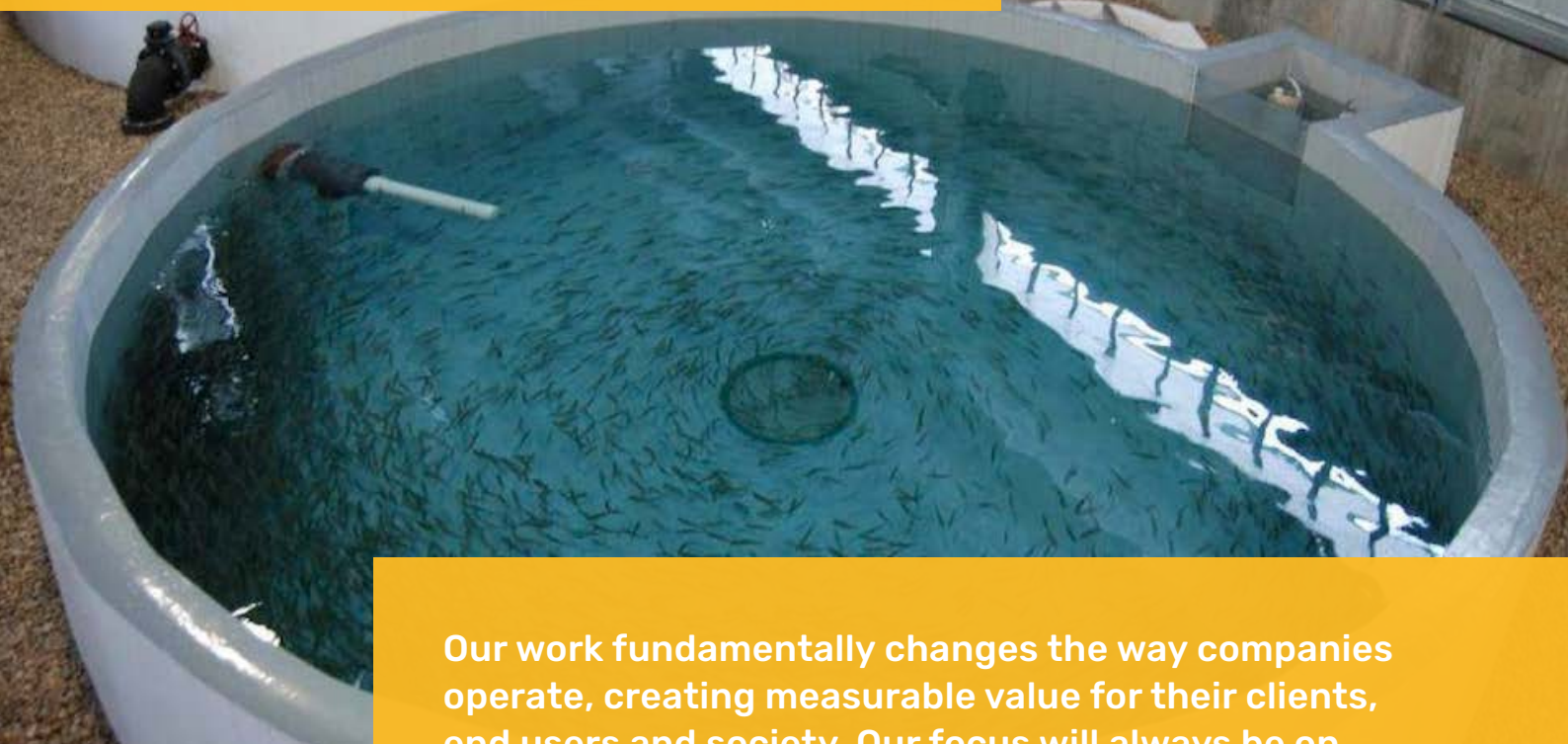
### Advanced Engineering Design Apps

The software enables engineering design to be computer generated for GFRP rebar in structural applications. AEDA assists in the engineering analysis and project specification stages to ensure all relevant certifications and standards are met when using GFRP rebar in concrete beams, slabs and columns.

# CWS100 Bio Chemically Modified lifetime waterproofing



# Client List, Proven Success



Our work fundamentally changes the way companies operate, creating measurable value for their clients, end users and society. Our focus will always be on partnering with our clients to create long-term economic, environmental and social value. Over the last decade we have demonstrated this with a diverse range of blue chip clients including:

## Advanteering Civil Engineers

AECOM

AFL services

Ansto

Ausgrid

Austeng

Bardavcol

Bianco Precast

Bluey Technologies

Boral

Buildcorp

Campeyn

Canberra Metro Construction

City of Melville

CPB Constructions

DPTI

Duratech Australia

EDI Works & York Civil

Freyssinet

Fulton Hogan

Hansen Yuncken

Ichor constructions

Jetty Specialist

Laing O'Rourke

LCJ Engineers

Leighton Contractors

Lend lease

Maritime Constructions

McConnell Dowell

GLink Gold coast light rail

## Mlei Consulting Engineers

MMM Civil

NSW Transport Roads & maritime services

One Steel

Quakewrap

SA Precast

Seacon Australia

Shire of Shark Bay

Solid Precast

Structual Works

Superior Jetties

Sydney Fish Market

UGL

University of Southern Queensland

Waterway Constructions

Octaform world leader in highly durable concrete Biogas tanks and Sewer Tanks



# inconmat



**inconmat**

info@inconmat.com.au  
PO Box 257  
North Adelaide SA 5006  
+61 (0) 423 500 886

**G:Link Light Rail,**  
Goldcoast, Queensland

GFRP Specified for  
Electromagnetic Neutrality

**INCONMAT.COM.AU**